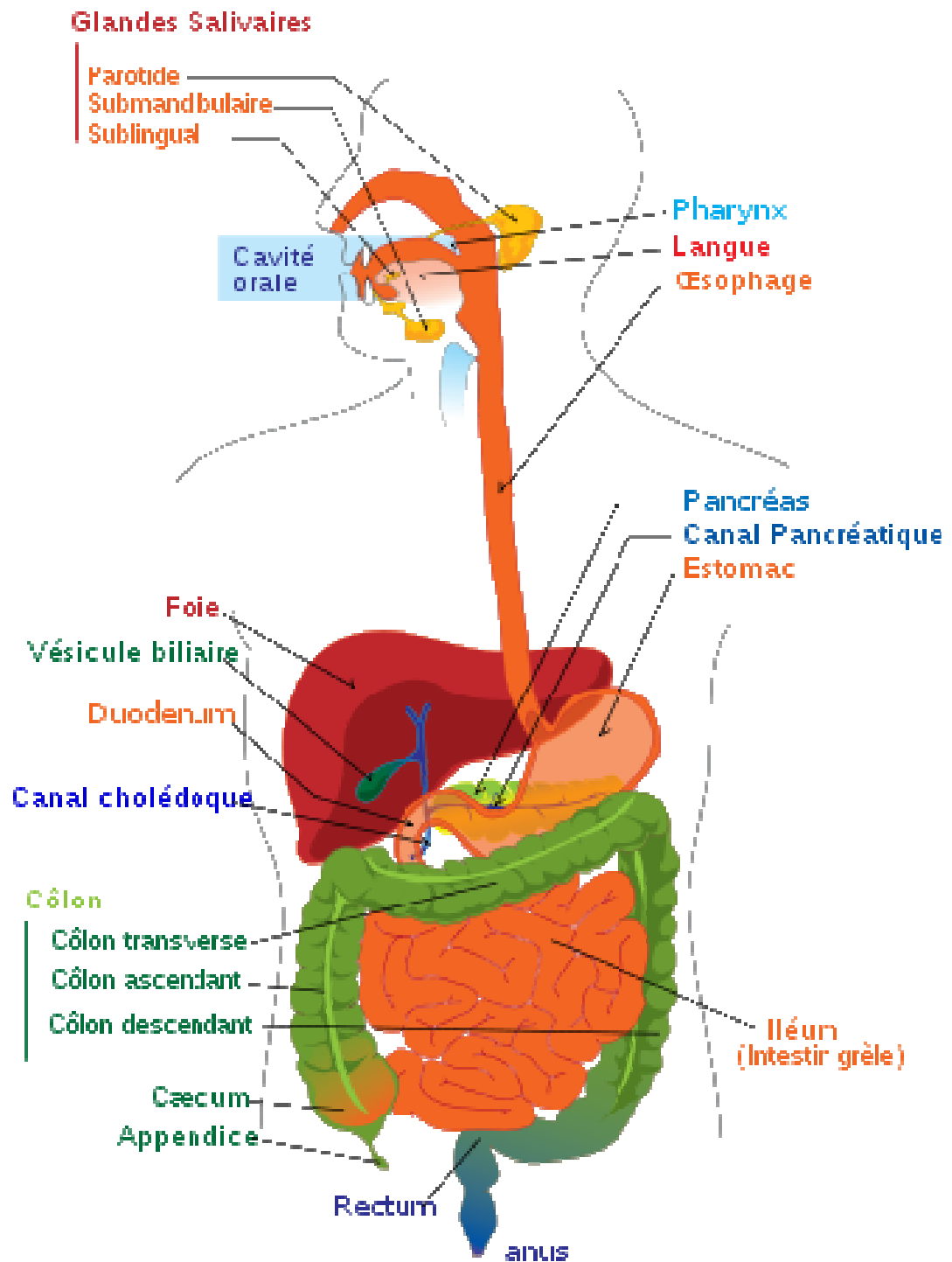
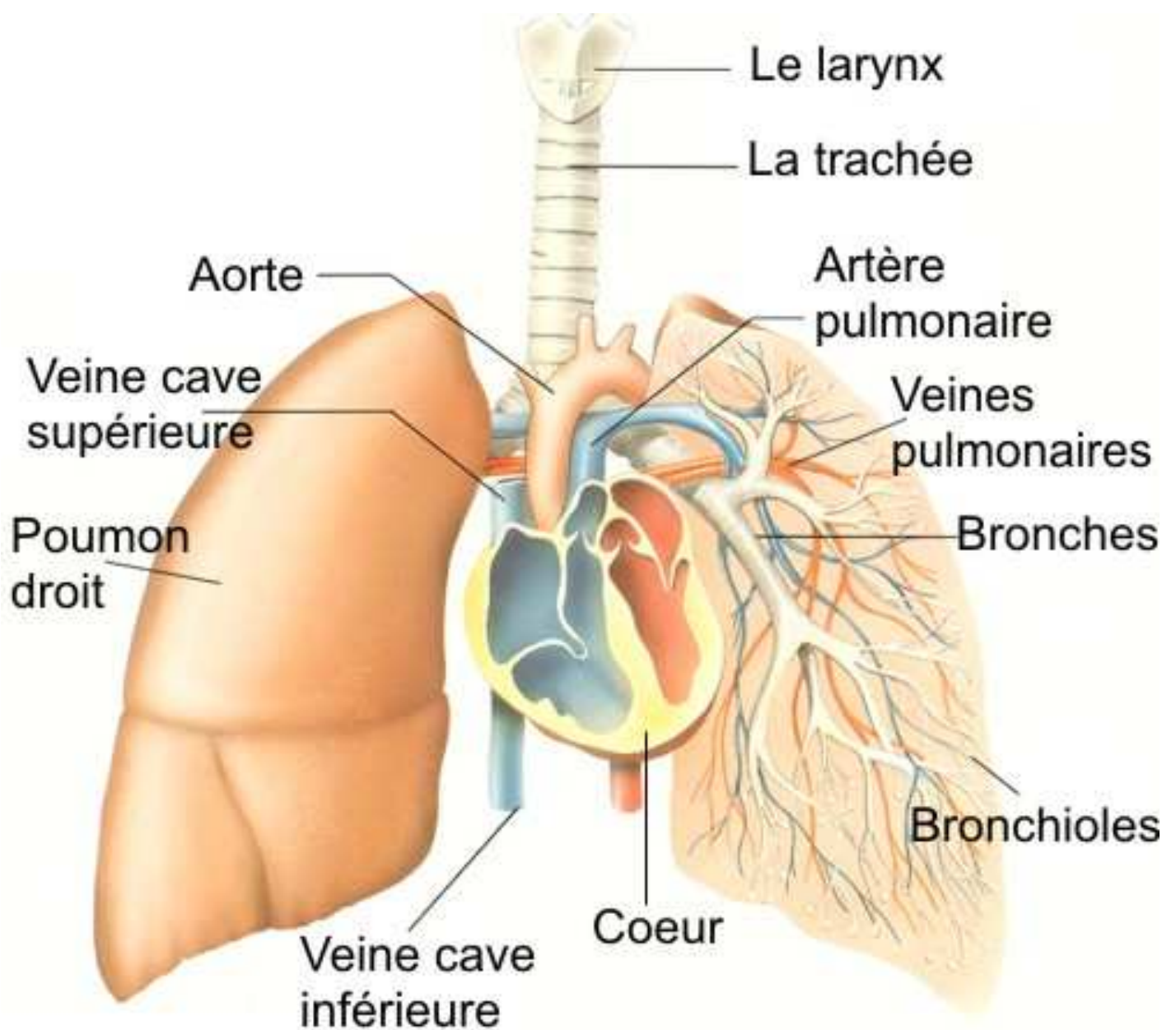


L'APPAREIL DIGESTIF HUMAIN



L'APPAREIL RESPIRATOIRE HUMAIN



L'APPAREIL CIRCULATOIRE ARTERIEL HUMAIN

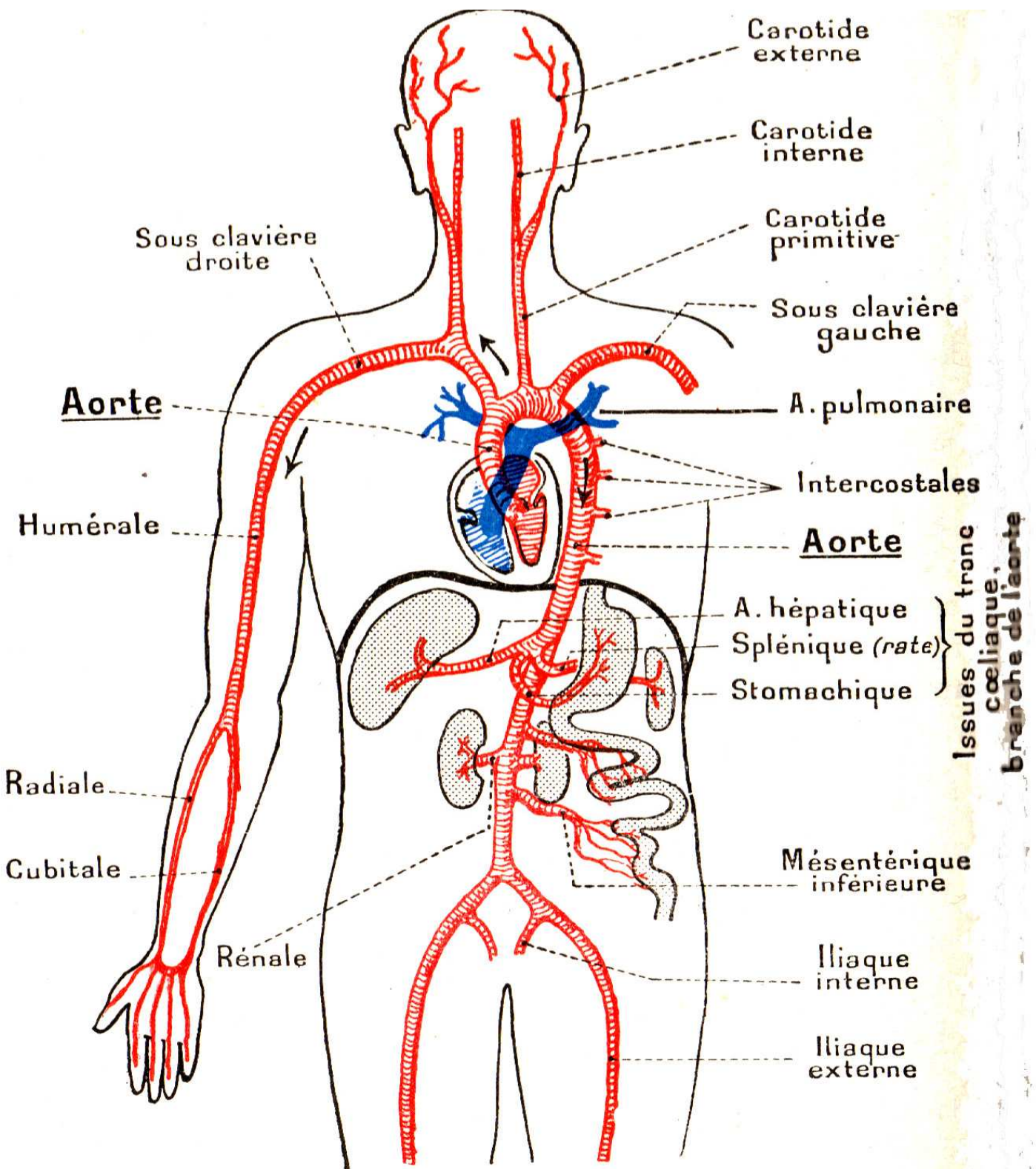


FIG. 98. — Schéma très simple de l'appareil circulatoire artériel de l'Homme.

L'APPAREIL CIRCULATOIRE VEINEUX HUMAIN

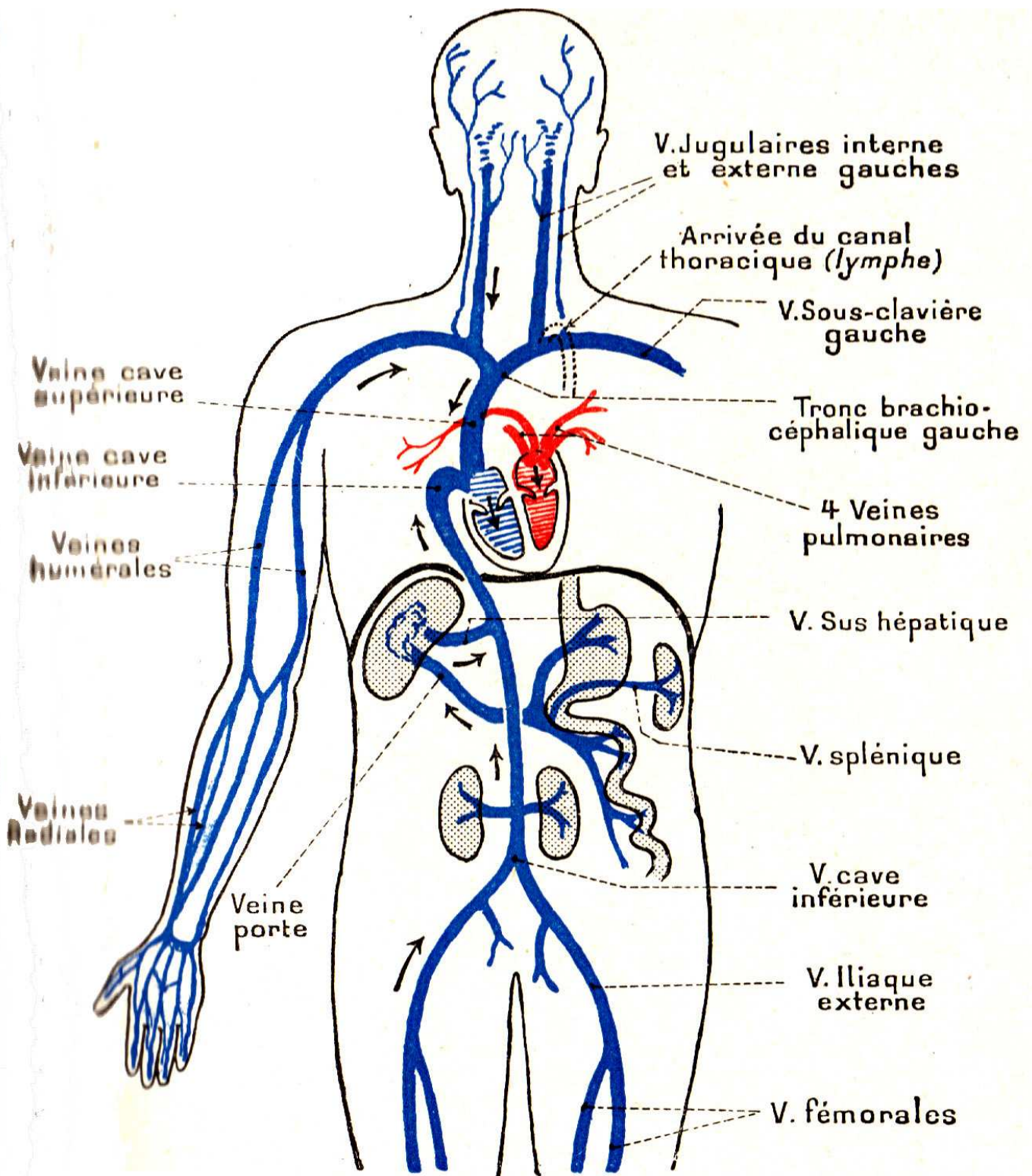
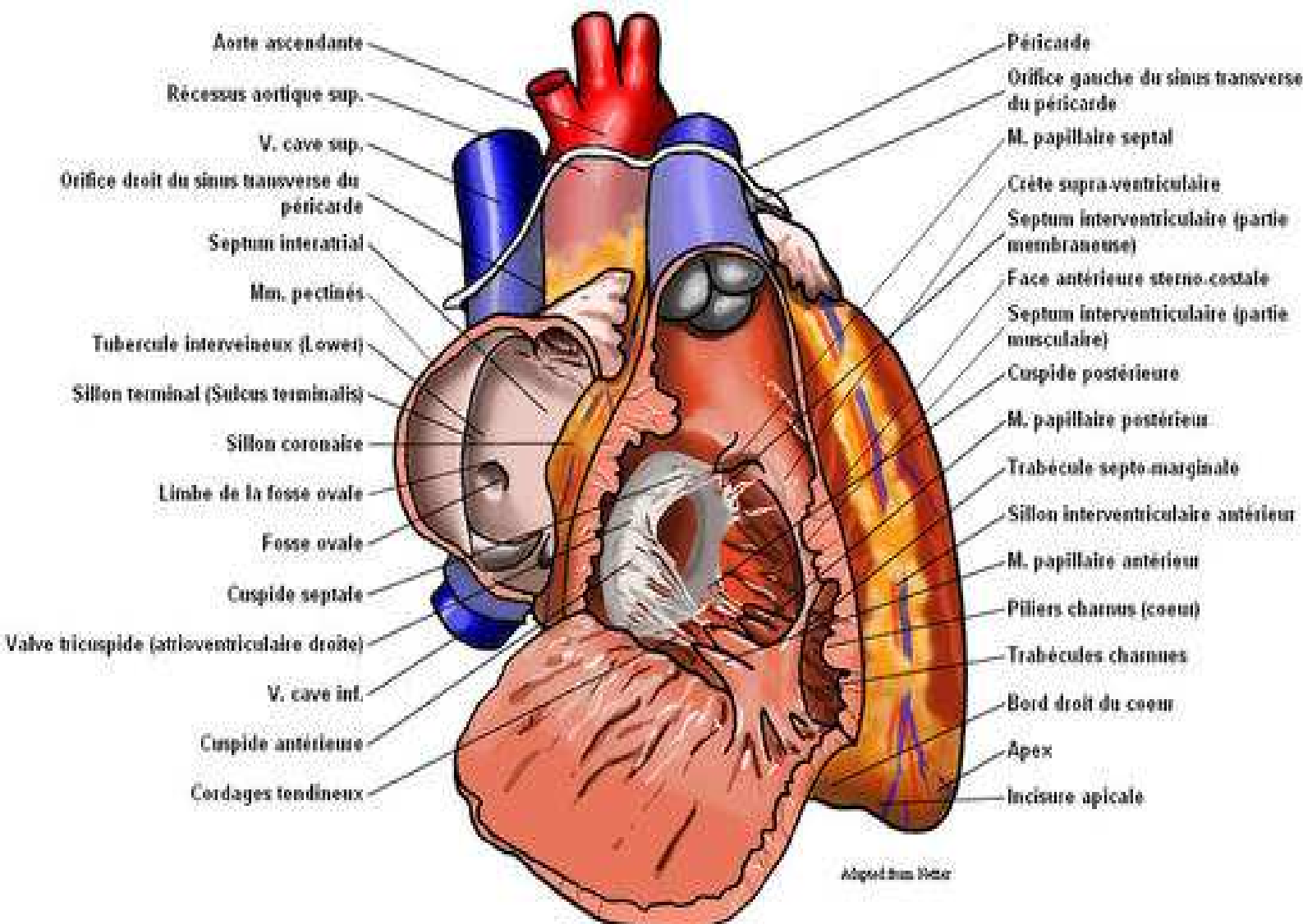
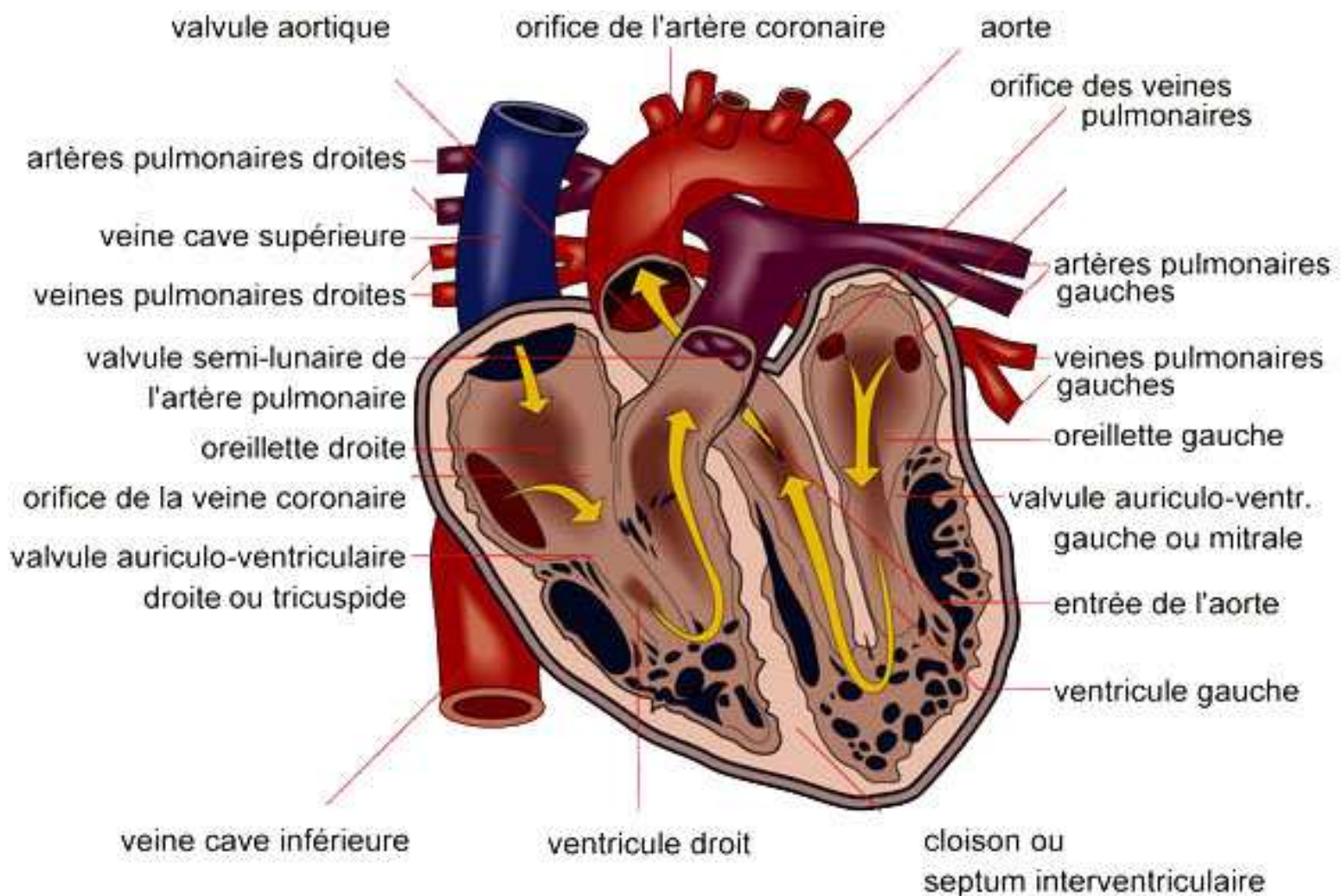


Schéma de l'appareil circulatoire veineux de l'Homme.

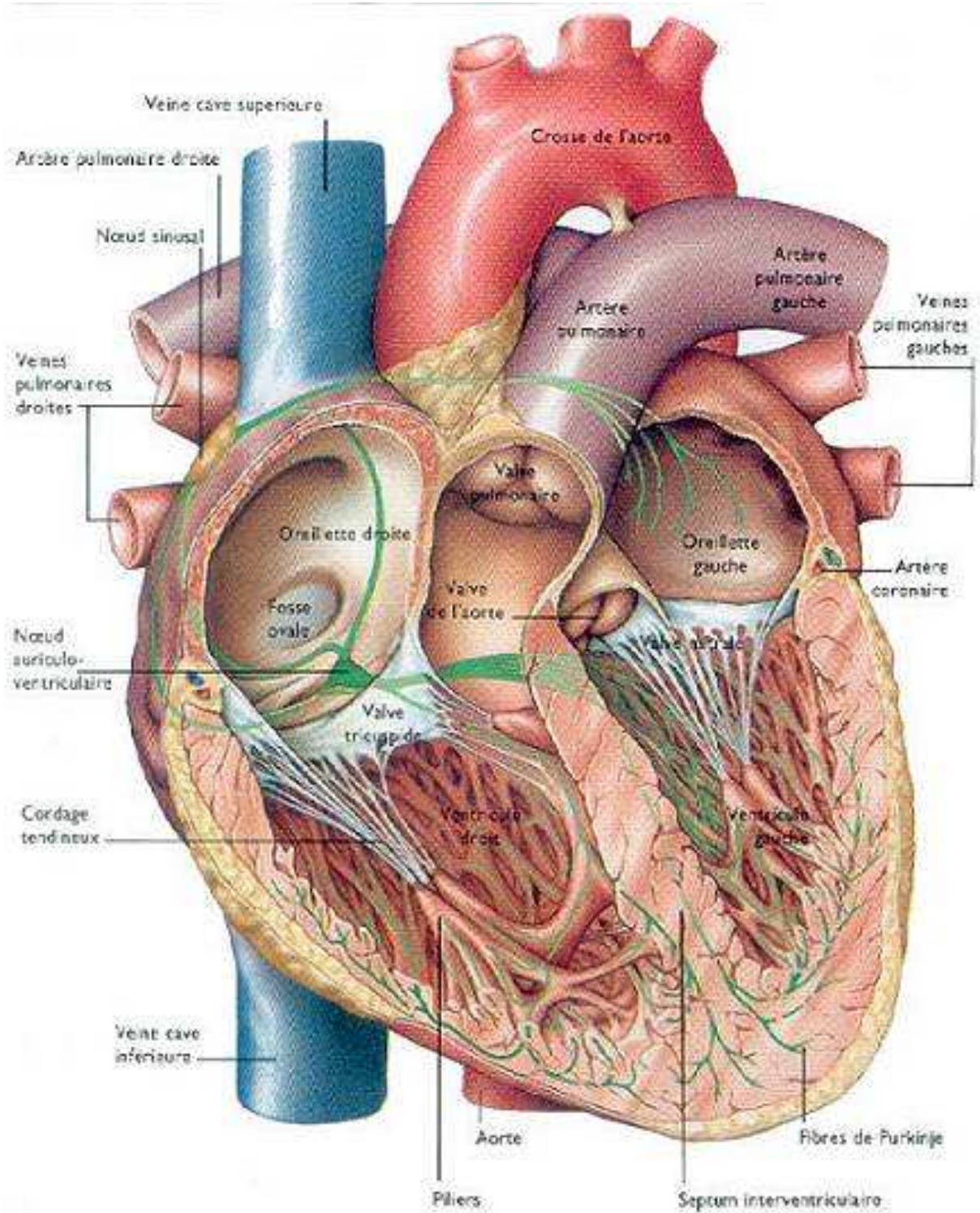
LE CŒUR HUMAIN



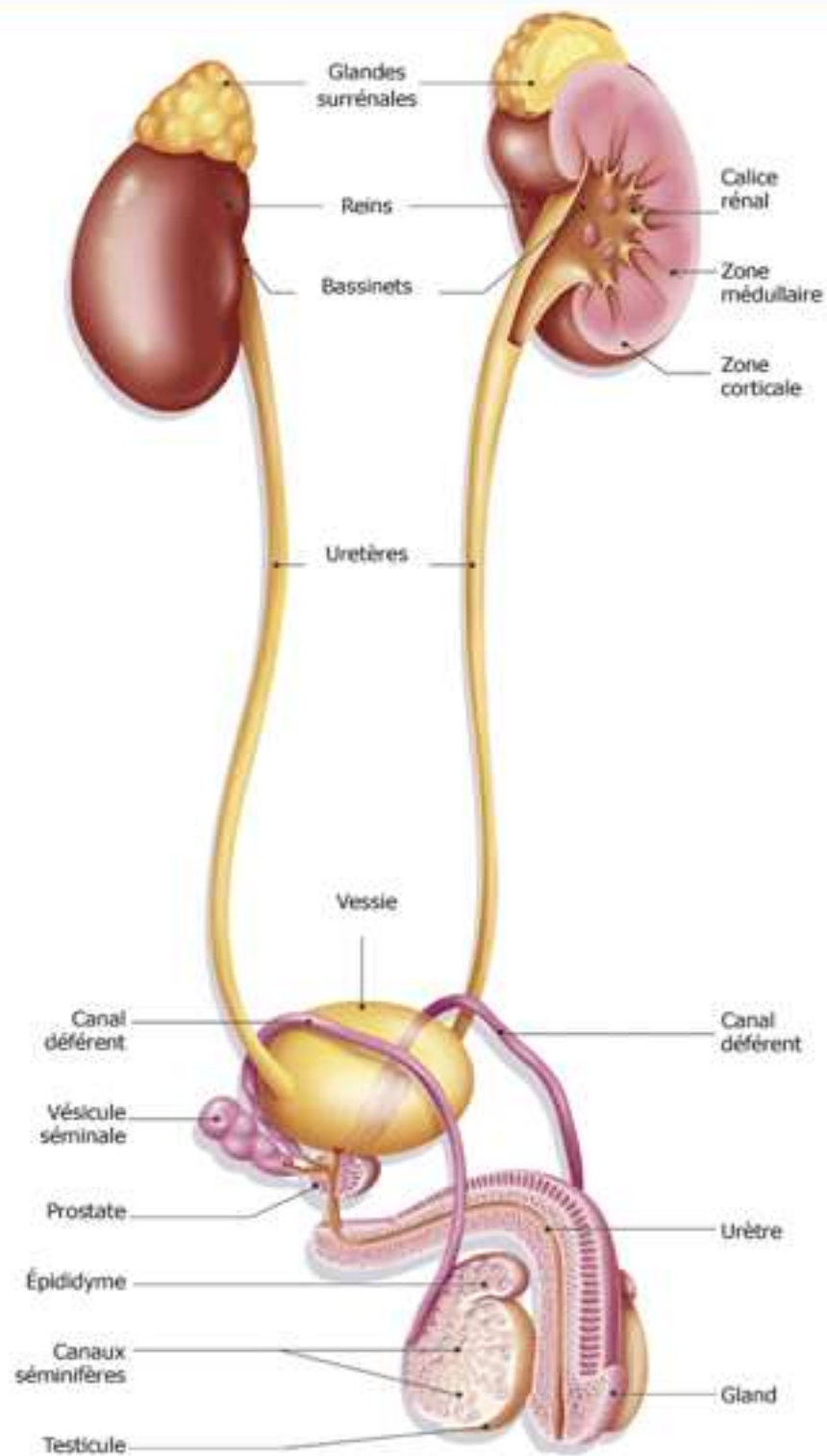
LE CŒUR HUMAIN



LE CŒUR HUMAIN

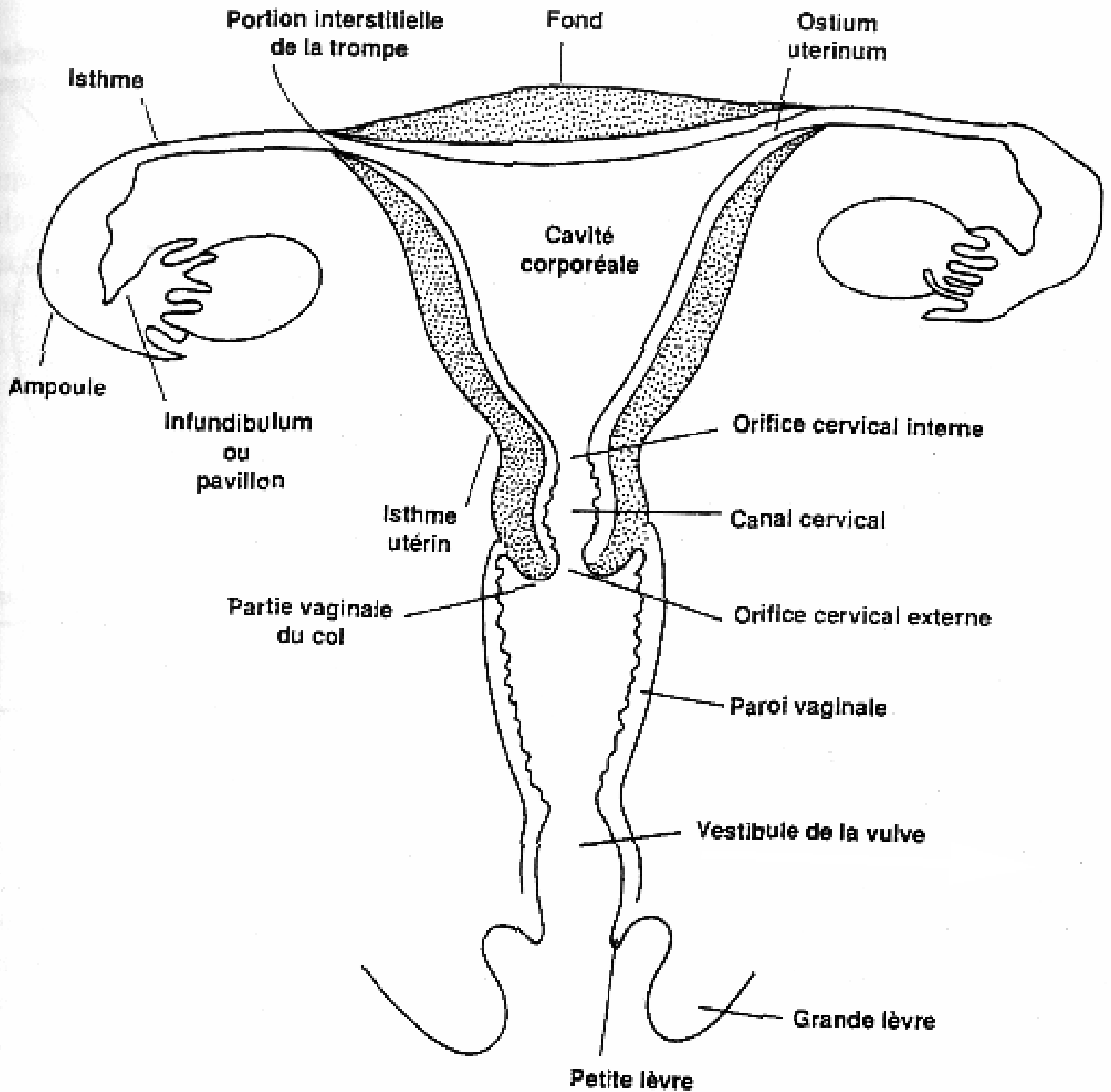


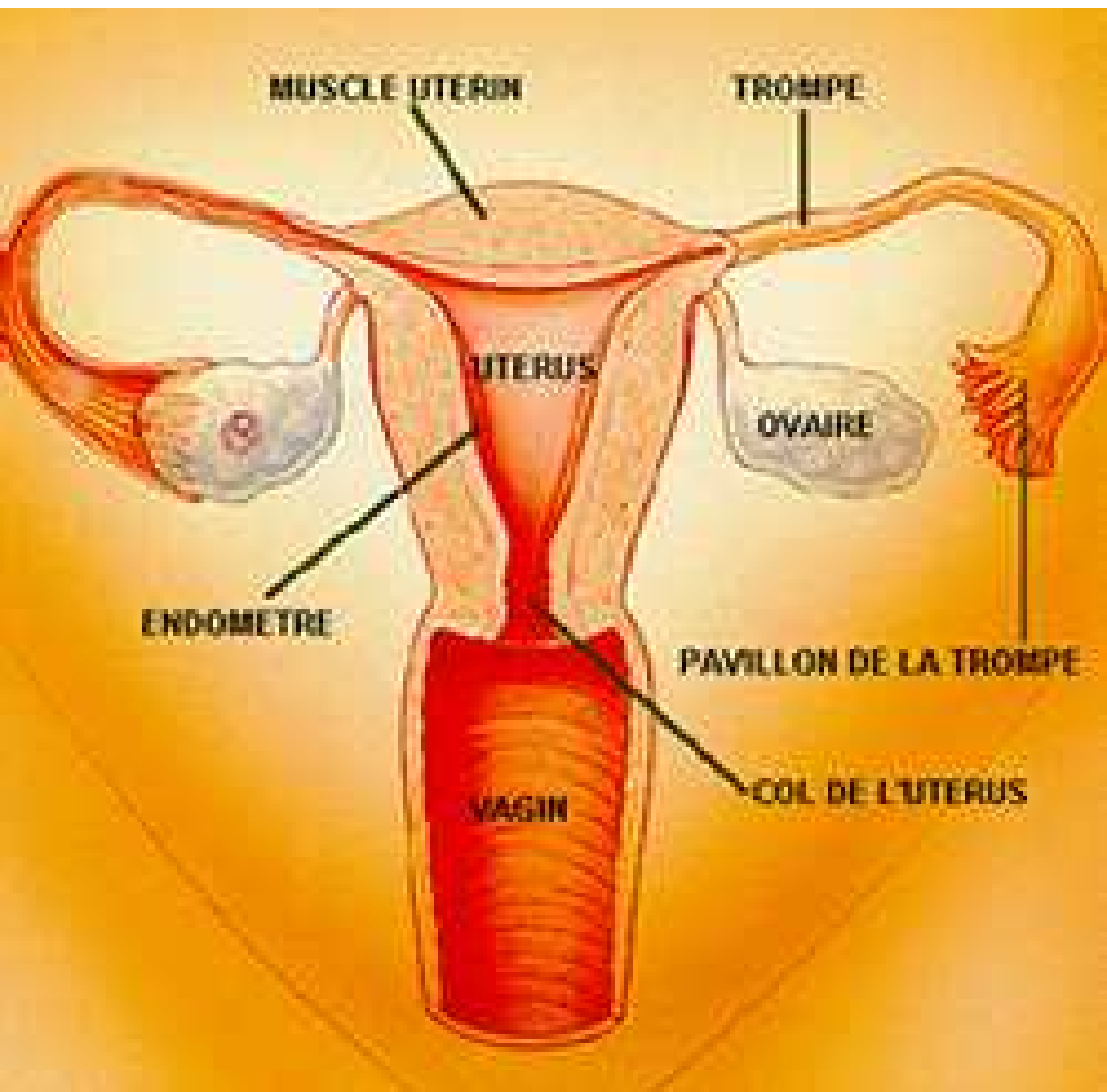
L'APPAREIL GENITO-URINAIRE MASCULIN



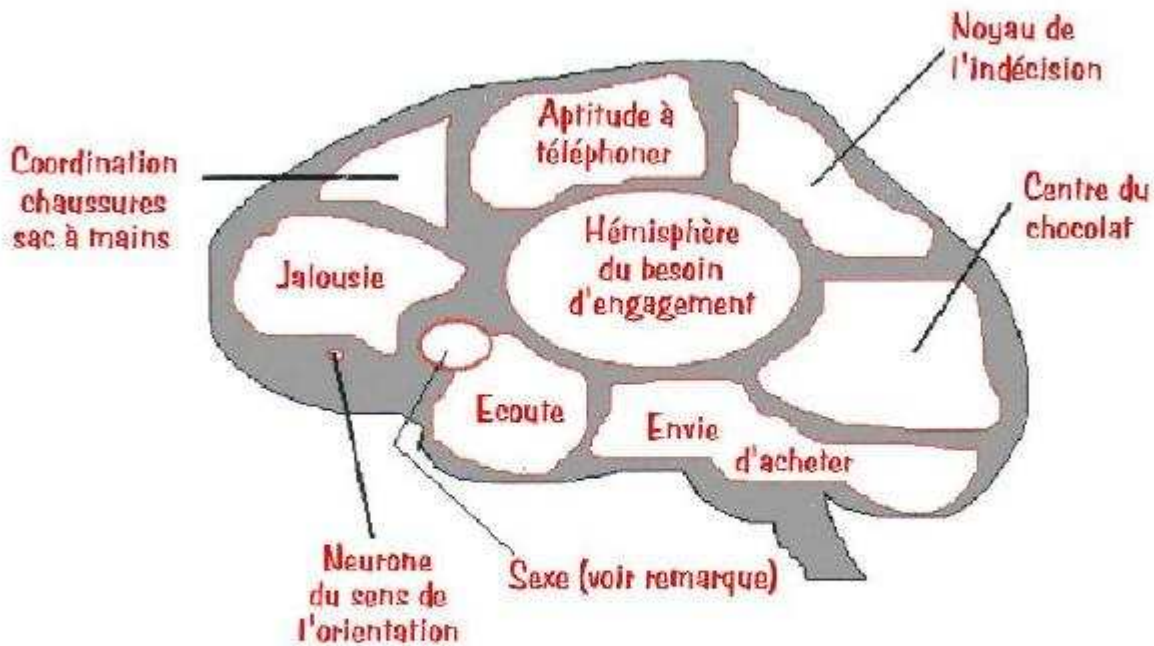
Appareil génito-urinaire masculin

L'APPAREIL GENITAL FEMININ



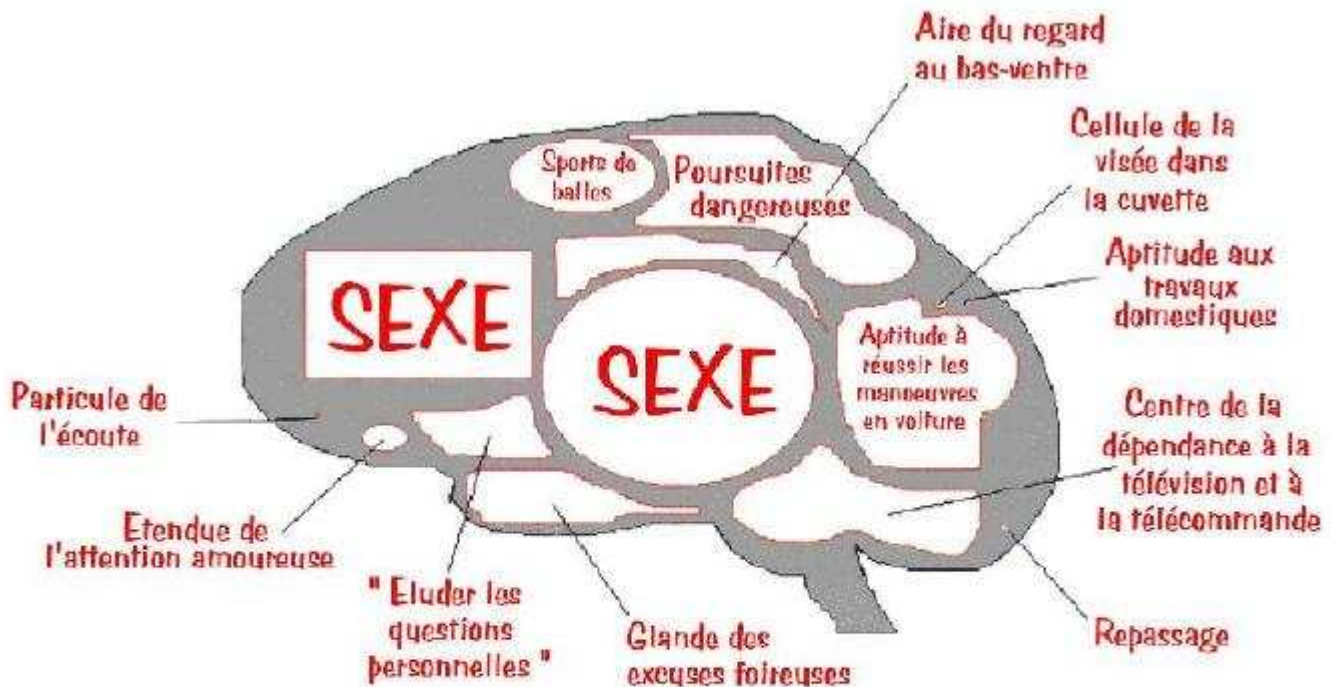


Le cerveau féminin.

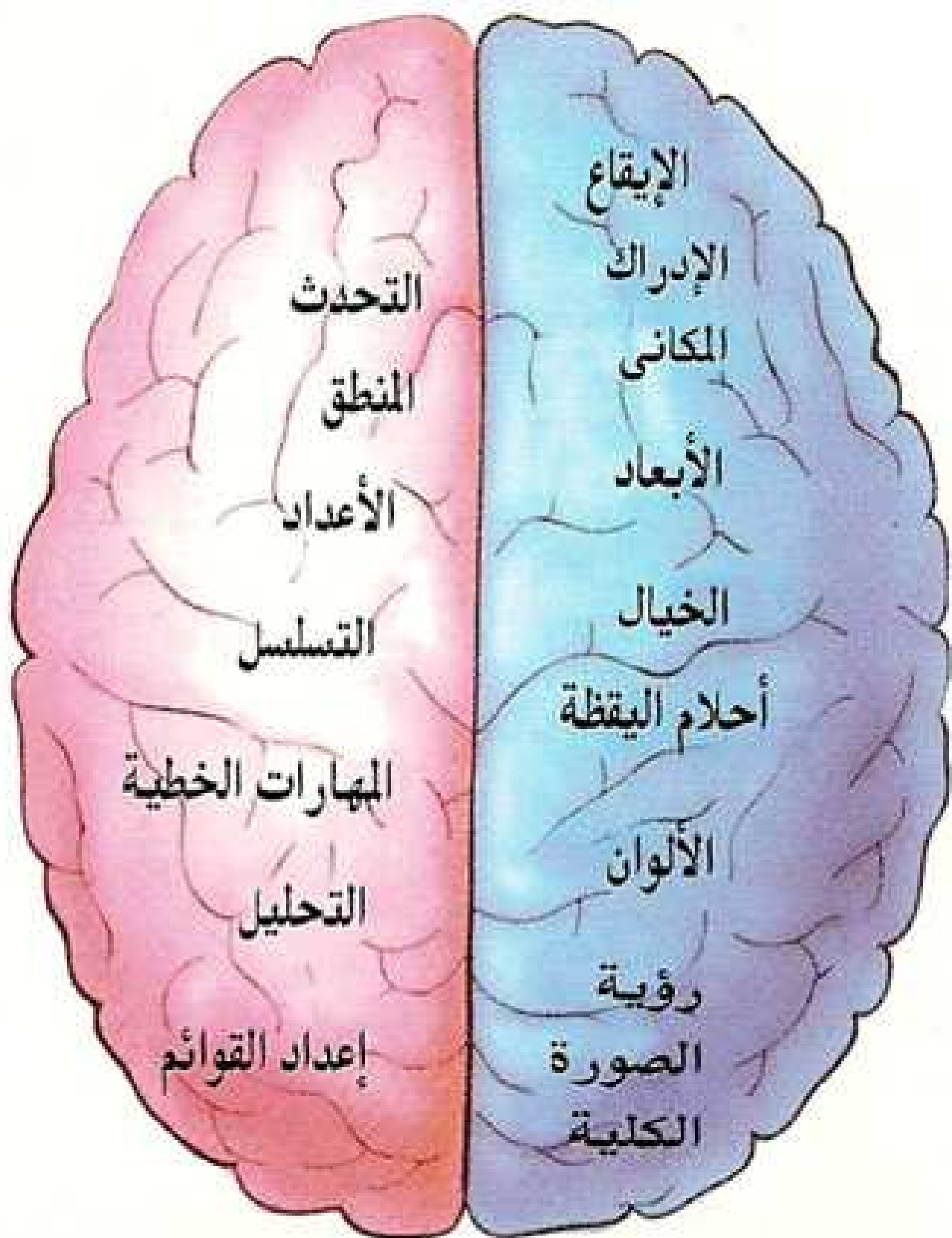


Remarque: Notez comme la petite cellule du sexe est intimement liée à la glande de l'écoute.

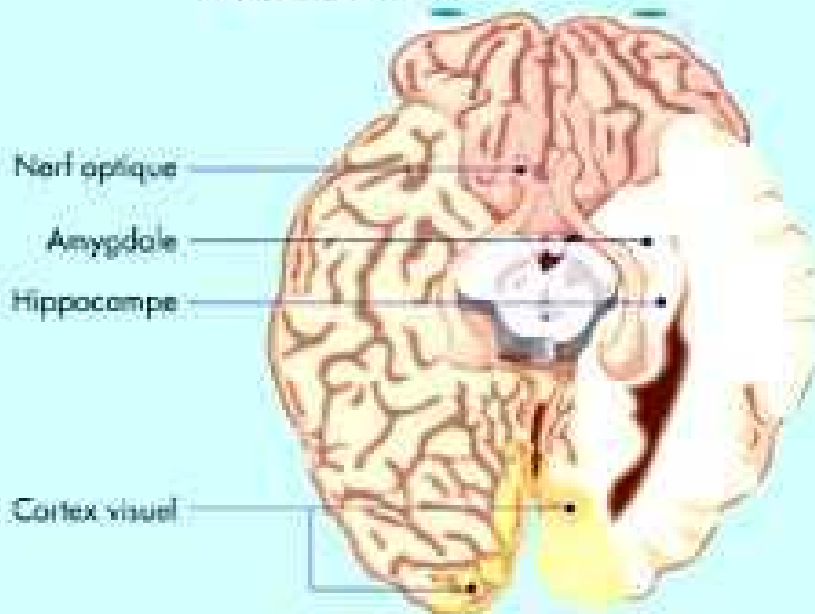
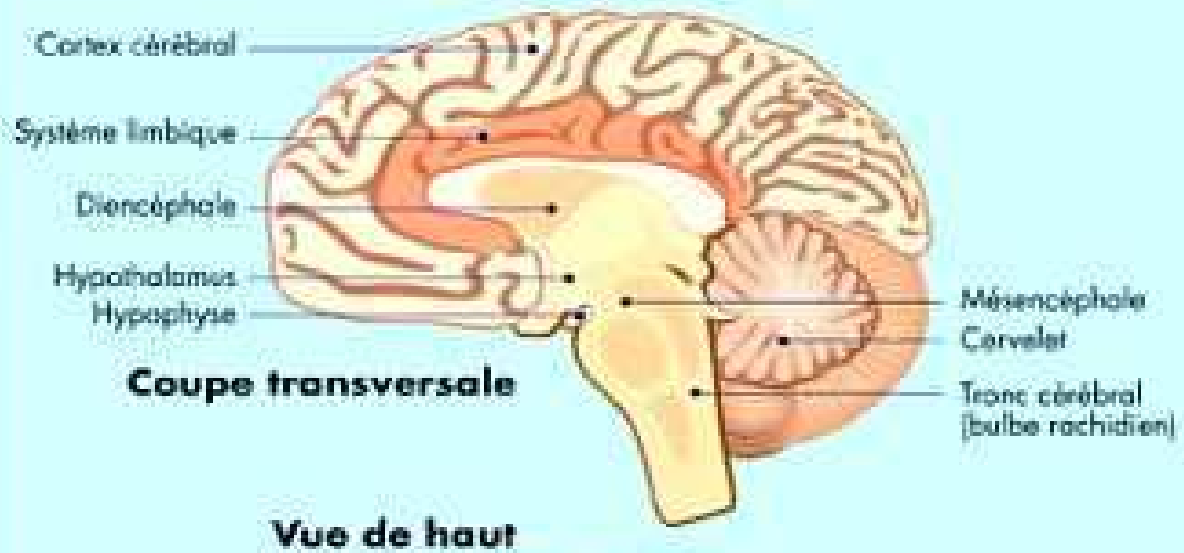
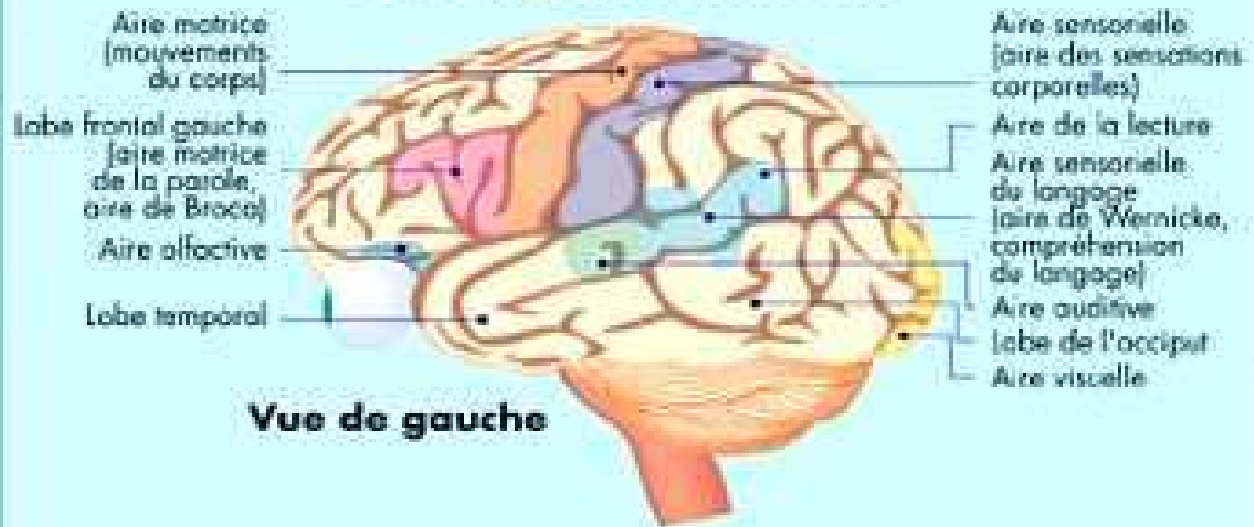
Le cerveau masculin.



Remarque: La glande "entendre les enfants pleurer au milieu de la nuit" n'est pas montrée en conséquence de sa nature sous-développée. Doit être observée au microscope.



Le cerveau humain



LE CERVEAU HUMAIN

